

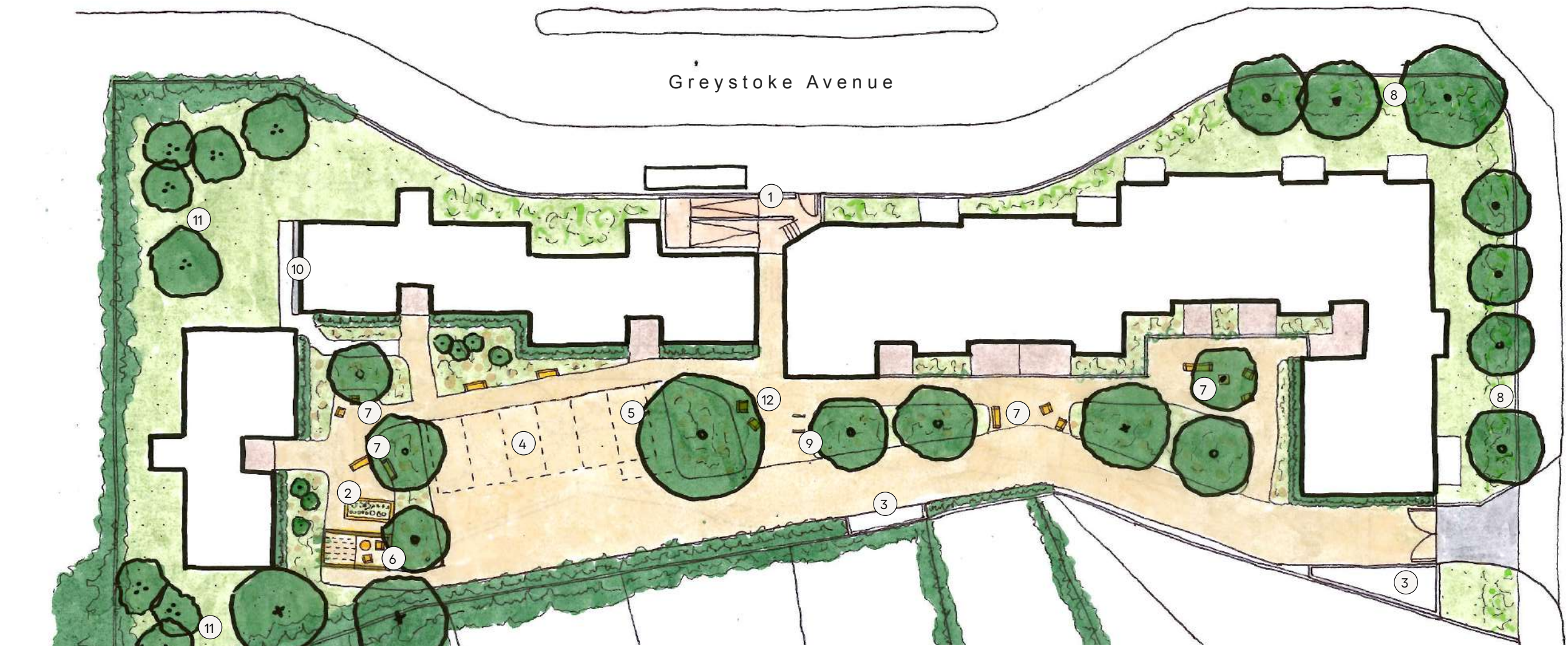


Aerial view of the Lilac Close proposal showing Ashburton Road in the foreground

Landscape Options



Option A



Option B

- Key
- | | | |
|------------------------|---|--|
| 1 New ramp position | 7 Seating nook | 11 Planting for wildlife |
| 2 Raised planting beds | 8 Trees and groundcover planting to enable open views | 12 Welcome space with large feature tree and seating |
| 3 Bin store | 9 Bicycle parking | 13 Fruit trees |
| 4 Parking spaces | 10 Electric meter store | |
| 5 Accessible parking | | |
| 6 Pergola with seating | | |



Relationship between access walkways and garden spaces



Garden structures for shade and planting



Sunny courtyard space

LILAC CLOSE

New housing for older people, Southmead



Aerial view of the Lilac Close proposal from the front, showing Trowbridge Road and Greystoke Avenue in the foreground



- Key
- 1. New communal residents gardens (refer to landscape plans)
 - 2. Laundry
 - 3. Accessible WC
 - 4. Mobility scooter storage
 - 5. Wheelchair accessible flat - M4(3)
 - 6. Deck above
 - 7. 1-bed flats
 - 8. Lift
 - 9. Community room
 - 10. Bin store

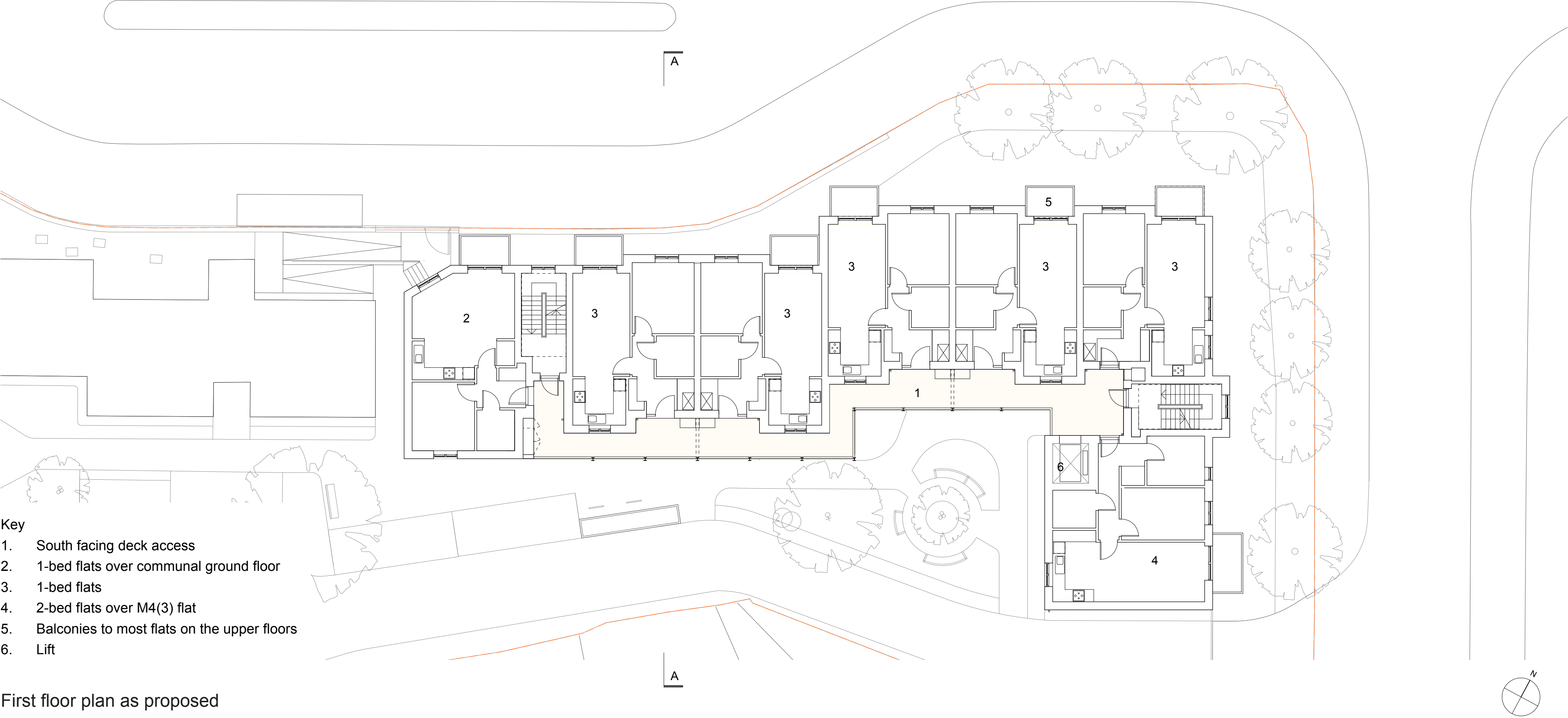
Ground floor plan as proposed



Proposed view from Arnside Road



Proposed view from the rear showing the access walkways and garden space



First floor plan as proposed



Cross Section AA as proposed, showing the narrowest portion of the site