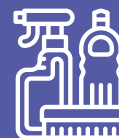


We're welcoming new residents

Here are just some of the measures in place to keep everyone safe:



Well practiced infection control procedures



Rigorous deep cleaning programme



Experienced teams with up to date training



Stocks of Personal Protective Equipment (PPE)

“

We know how important choosing the right home is, so we're here to answer any questions you may have. We're doing everything we can to keep the people living and working in our homes, and their visitors, safe. This may mean doing things a little differently, but we're still providing the same extraordinary care in these extraordinary times.”

Sandra Payne, Director of Nursing and Care Homes

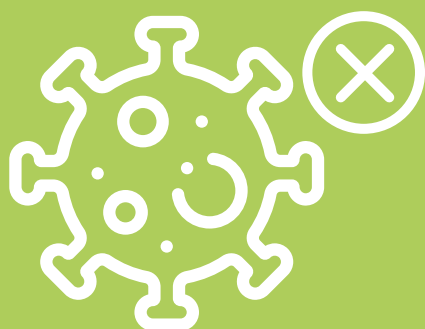
extraordinary care brunelcare



Testing of all residents and colleagues



Socially distanced visiting by appointment



Admissions from healthcare settings all require a negative test



Keep in touch with loved ones with regular video calls



'Good' and 'Outstanding' ratings

brunelcare 

To find out more, visit:
brunelcare.org.uk/care-homes